



# BT Westpac NZ Premium Investment International Diversified Share

## Fund Information

Launch Date	10/06/2008
Sector	Equity - Global
Domicile	New Zealand
Currency	NZD
Price (Bid/Mid) (as at 25/10/2019)	\$2.02
Manager name	n/a
Manager Since Date	n/a
Fund Size	\$80.35m at 30/09/2019
Number of Holdings	n/a
Yield	n/a
Dividend dates	
MII	\$100000.00
Minimum Regular Savings	n/a
AMC	1.32%
Performance Fee	0%
TFF	1.44%
Launch Price	n/a
Legal Structure	Unit Trust
Membership Fee	\$0.00

## Fund Objective

The Fund aims to provide capital growth over the long term by investing primarily in a diversified portfolio of listed international equities.

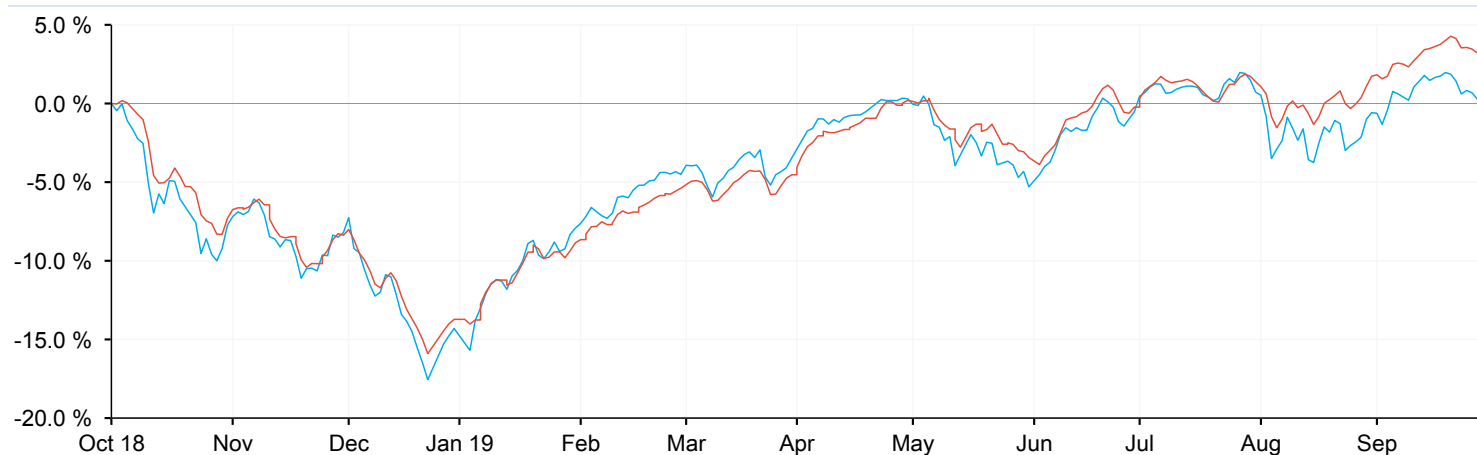
## Breakdown

No breakdown data available for BT Westpac NZ Premium Investment International Diversified Share

# BT Westpac NZ Premium Investment International Diversified Share

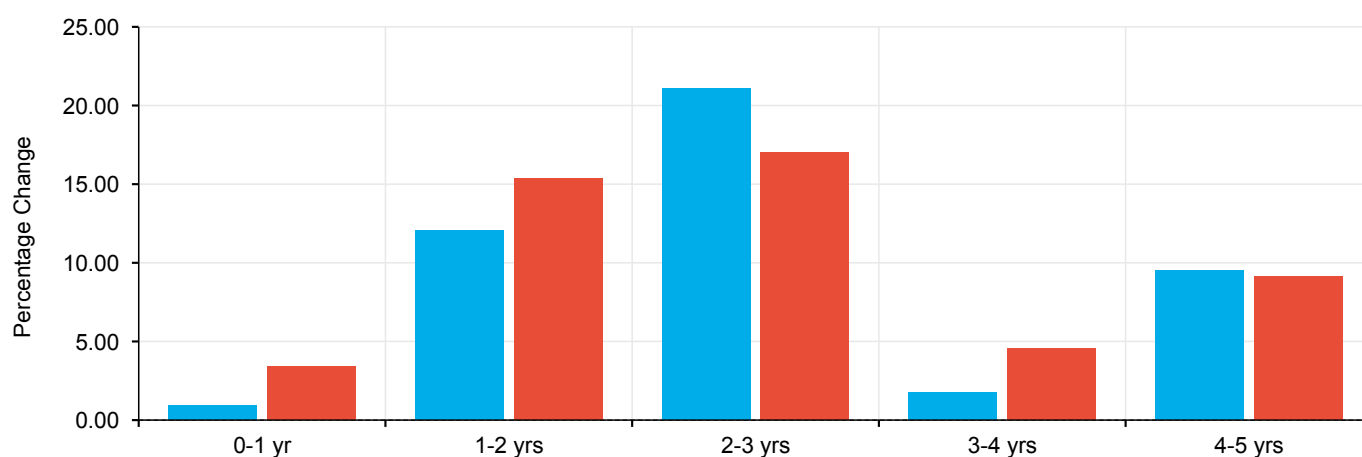
## Cumulative Performance (%) (as at 30/09/2019)

	3m	6m	1 yr	3 yrs	5 yrs	10 yrs	Since launch
BT Westpac NZ Premium Investment International Diversified Share	1.25	4.34	0.91	36.89	52.54	n/a	120.97
Equity - Global	3.62	8.29	3.42	39.62	59.27	137.91	n/a



## Discrete Performance (%) (as at 30/09/2019)

	0-1 yr	1-2 yrs	2-3 yrs	3-4 yrs	4-5 yrs
BT Westpac NZ Premium Investment International Diversified Share	0.91	12.03	21.09	1.75	9.52
Equity - Global	3.42	15.38	17.01	4.54	9.12



## Risk Statistics

FE Risk Score	Sharpe	Volatility
n/a	0.71	10.59